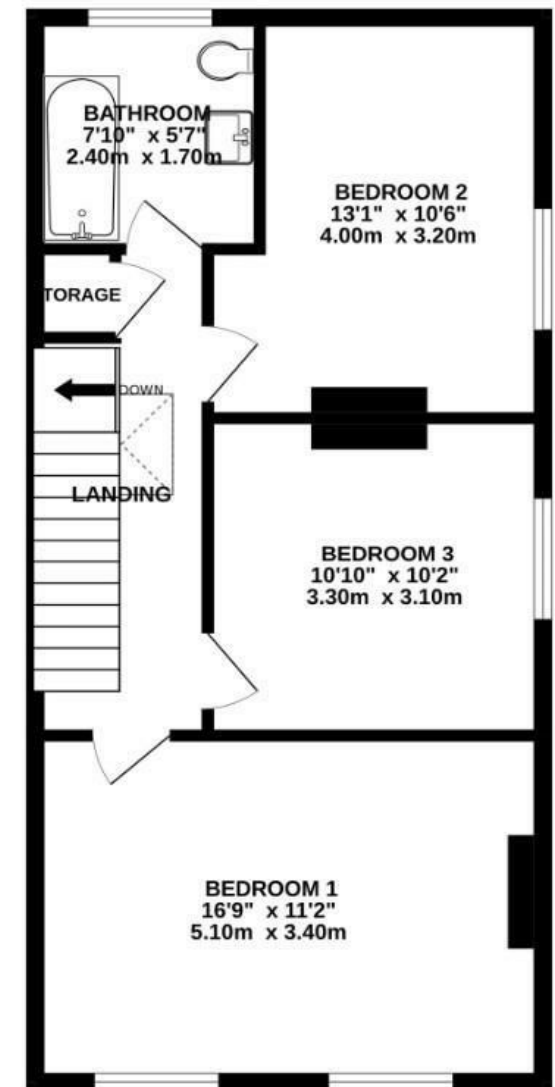
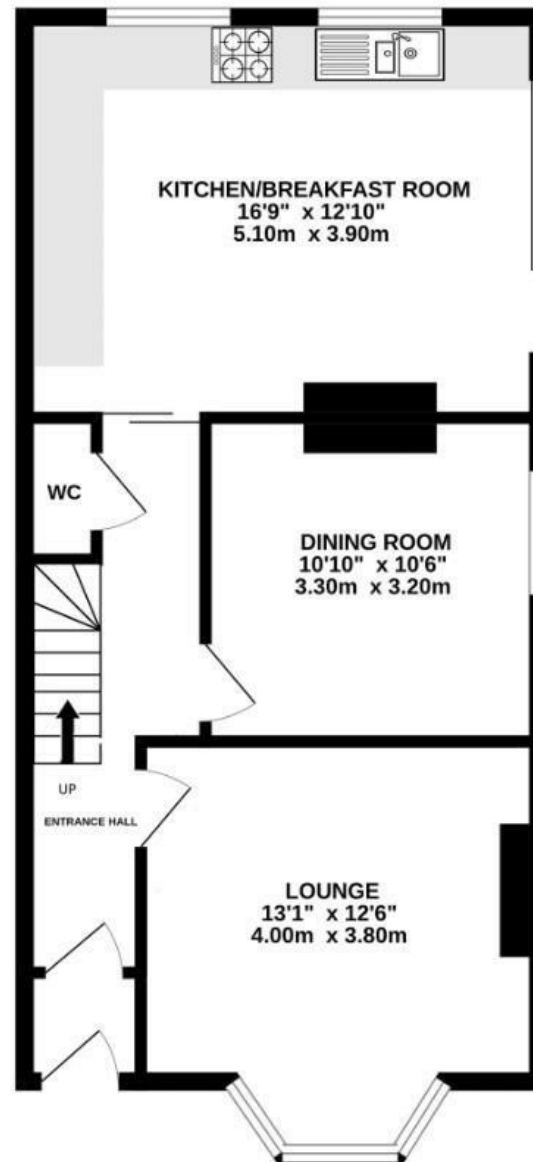


Grove Road

FISHPONDS

APPROXIMATE FLOOR AREA
112.2 SQM / 1205 SQFT



Illustrations are for reference purposes only, measurements are approximate, not to scale.

Boardwalk

Grove Road

FISHPONDS, BRISTOL

£

£450,000

zzz

3 Bedrooms



BS16 2BJ



2 Bathrooms

"We feel incredibly lucky to have lived on Grove Road in Fishponds. It's a quiet, well-situated street with a strong sense of community and friendly neighbours who stop for a chat. We've loved being just a short stroll from the vibrant Fishponds Road, where you'll find cosy cafés, independent shops, and great places to eat. Having Eastville Park and the Bristol to Bath cycle path nearby has been perfect for weekend walks and bike rides. It's been the ideal mix of city convenience and green space—we'll really miss it!"

